



# WELCOME to WOODS HOLE

*A world center for marine,  
biomedical, and environmental  
scientific exploration*

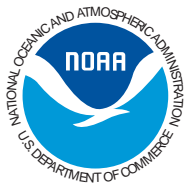
# Welcome to Woods Hole

## A HISTORY OF THE SCIENTIFIC COMMUNITY

The village of Woods Hole was settled more than 300 years ago and for two centuries remained primarily a farming and whaling community. Then in 1871 the United States Commission of Fish and Fisheries (precursor of the National Marine Fisheries Service) was established, and its

Water Street early  
s Candle House at  
right dates to Woods  
Hole's whaling days  
Fisheries  
building is at left in  
background

# Map of Woods Hole

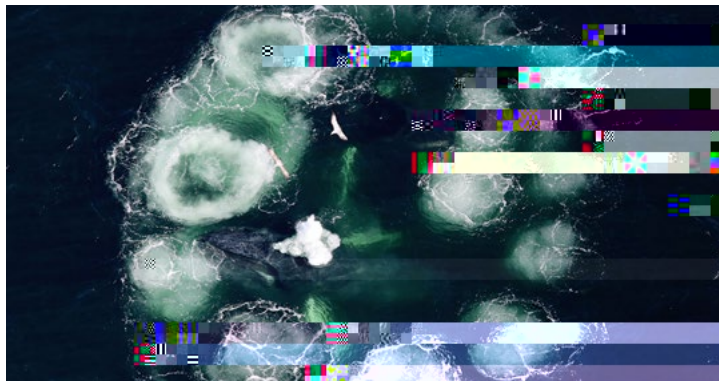
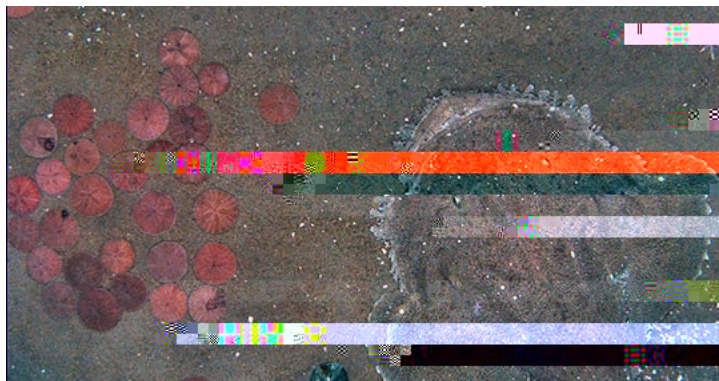
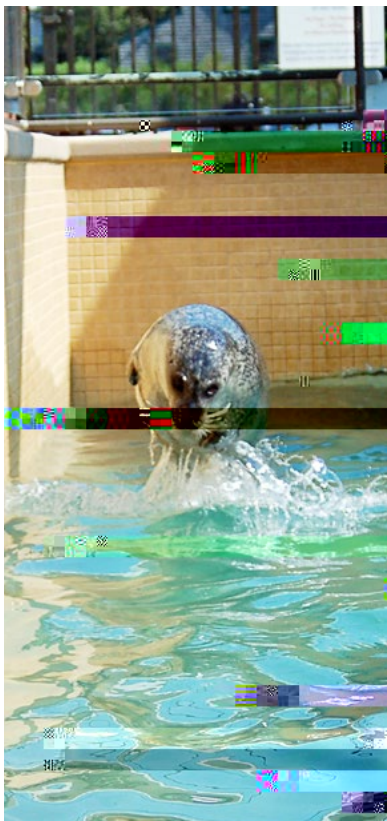


FOUNDED

NOAA Fisheries is the federal agency with stewardship responsibility for our nation's living marine resources. The agency's Woods Hole Laboratory conducts research on fisheries resources and the fishermen who harvest them, and on marine mammals and other protected life in the Northwest Atlantic Ocean. Information derived from this research is primarily used by those who make management decisions about these resources and their habitats.

The laboratory is the nation's first and oldest facility specifically dedicated to marine fisheries research. It became a year-round institution in 1875 and is currently part of the U.S. Department of Commerce, National Oceanic and Atmospheric Administration, National Marine Fisheries Service. Laboratory scientists are primarily interested in three broad areas of research—resource assessment, ecosystem monitoring, and socioeconomics. Resource assessment scientists determine the distribution, size, and productivity of marine fish, shellfish, and marine mammal populations, as well as the effects of fishing and other human activities on those populations. Ecosystem monitoring scientists investigate the role that natural or nonhuman factors (such as climate change and food web dynamics) play in marine populations and the overall ecosystem. Socioeconomic scientists study the

social, economic, and cultural effects of fisheries and marine mammal management on coastal communities in the New England and Mid-Atlantic states. Fieldwork by laboratory scientists is supported by sev



Photos courtesy of National Marine Fisheries Service

Left Lu Seal Woods Hole Science Aquarium's resident marine mammal See back cover for hours and location

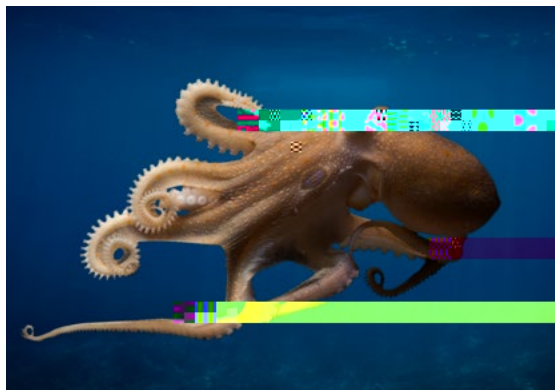
Top right A monk sh and sea scallops on the ocean's bottom Image taken by a towed camera during a research cruise

Below right Two humpback whales make a net of bubbles to trap prey photographed during a NOAA Fisheries whale research ight Image taken under MMPA research permit#

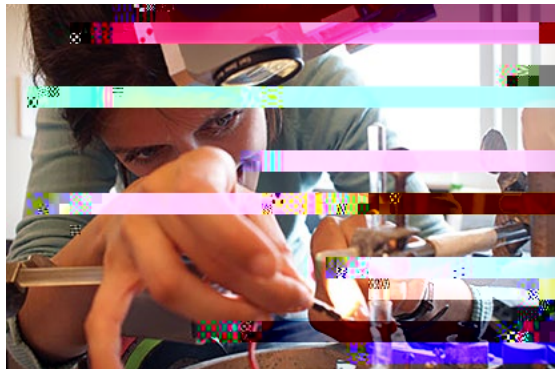




MBL Collection



Tom Kleindinst



MBL Collection

Left The MBL has a long history of research in ecosystems science and global change and carries out studies on ecological change and its impact in a number of locations from coastal oceans to the Arctic

Top right Marine organisms with their many unique characteristics and traits represent the next frontier of basic biological discovery

Bottom right MBL scientists investigate diverse areas of fundamental biology to explore the origins diversity and nature of life on a changing planet and to inform the human condition

# Woods Hole Oceanographic Institution [www.whoi.edu](http://www.whoi.edu)

## FOUNDED

Woods Hole Oceanographic Institution (WHOI) is an independent, non-profit organization established in 1930 and located on Cape Cod, Massachusetts. It combines state-of-the-art ocean science and engineering with world-class marine operations to drive understanding about our ocean and its connections to life on Earth and to communicate this knowledge for our planet and our future.

WHOI boasts a storied history of exploration, innovation, and discovery. The discoveries made by WHOI's scientists and engineers have led to





Left Human Occupied  
Vehicle HOV Alvin  
enables in situ data



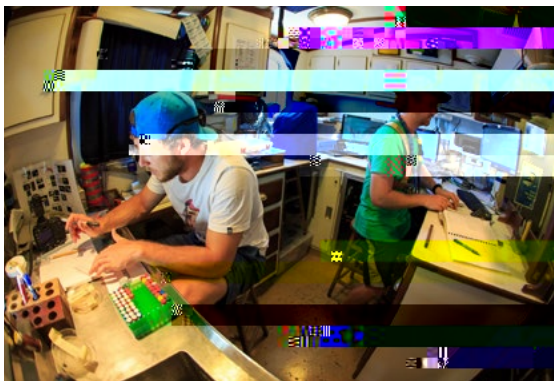
# United States Geological Survey

[woodshole.er.usgs.gov](http://woodshole.er.usgs.gov)





# Sea Education Association



# Woodwell Climate Research Center [woodwellclimate.org](http://woodwellclimate.org)

FOUNDED AS  
WOODS HOLE  
RESEARCH  
CENTER  
IN

Woodwell Climate Research Center advances scientific discoveries and just, effective strategies to address the climate emergency. Originally founded as the Woods Hole Research Center in 1985, our world-leading research and outreach helps individuals, communities, corporations, and nations understand the realities of climate change, recognize the impact it is having everywhere on our planet, and embrace the urgent action needed to safeguard the future of life on Earth.

Woodwell Climate holds an important place in the history of the environmental movement. In 1979, founder Dr. George M. Woodwell was one of the first scientists to testify before the US Congress about the dangers of climate change. Our scientists helped to launch the United Nations Framework Convention on Climate Change in 1992. In 2007, multiple Woodwell Climate scientists shared the Nobel Prize awarded to the Intergovernmental Panel on Climate Change. And two Woodwell Climate presidents, Dr. Philip B. Duffy and Dr. John P. Holdren, have served in White House science advisory positions.

For 35 years, we have investigated how human activities are affecting the flow of carbon and water—key climate factors—through the world's most consequential ecosystems, including the Arctic and the Amazon. Our scientists are experts in combining field data with

large-scale satellite monitoring and computer modeling to generate insights that scale from local to global. We work with partners, stakeholders, and government officials in more than 20 countries across six continents, engaging throughout the research process to ensure that our discoveries can be integrated into real-world decision-making. This approach shaped the first guidelines for corporate disclosure of physical climate risk (2018) and informed critical Brazilian legislation to protect 30 million acres of Amazon forest (2019).

While we work all over the world, our main field



Top left Gilman Ordway  
Campus George M  
Woodwell Building

Top right Researchers  
investigat3@d [(r)-9a)( n7 ( .



© Chris Linder

# Woods Hole at a Glance